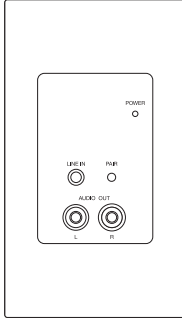


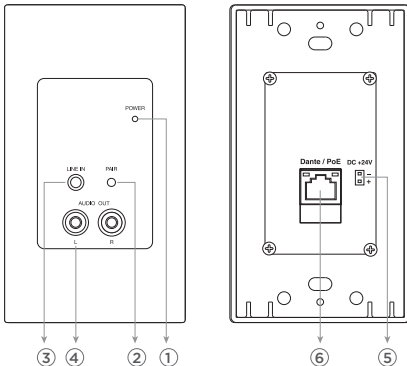
## DIC2A23A

2x2 Bluetooth/  
Dante Wall Plate Interface



OWNERS MANUAL

## Function



1. Power/Status LED indicator.
2. Bluetooth pairing button.
3. 3.5mm TRS input connector.
4. RCA stereo output connector.
5. 2PIN power supplier connector.
6. RJ-45 network connector (for Dante/PoE)

## Introduction

McLELLAND DIC2A23A is Bluetooth audio receiving panel, with a 3.5mm TRS Line level input and two RCA Line level outputs. When paired with a compatible Bluetooth enabled device, the panel receives stereo audio from the Bluetooth source, and converse to the two Dante audio channels via standard CATx cable with RJ-45 connector.

DIC2A23A powered by using PoE (Power over Ethernet), or DC24V power supply, and features high-quality circuits to provide studio grade of performance without worrying about ground loops or other common audio problems. High performance, simplicity of operation and efficiency of installation make DIC2A23A the best to use for installed sound system, teleconferencing, etc.

## Features

- \*Dante Interface 2 input and 2 output channels.
- \*Converts 2 channels of Bluetooth (priority) or 3.5mm TRS audio signal to Dante network.
- \*Converts 2 channels Dante audio to unbalanced RCA audio outputs
- \*Easy Bluetooth connection by a single button.
- \*Status LEDs indication on the front panel.
- \*Good compatibility with most smartphones, tablets or other Bluetooth devices.
- \*Power supply via PoE network switch or DC24V input.
- \*Simply audio configuration and routing by using Dante Controller.

## Operation

### Powering up

After DIC2A23A is powered and switched on, the Power LED on the panel will light up and flash alternately in blue and red for a short period of time, and if the power is successfully switched on, only red LED will light up steady.

### Bluetooth Pairing

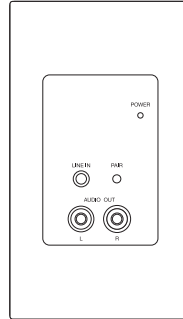
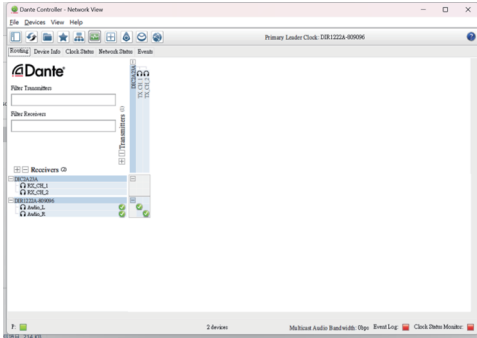
Press the button about 3 seconds to into pairing mode, the blue LED on the panel will start to flash alternately, indicating this device is now at the pairing mode and visible on other Bluetooth devices and accepting pairing. You can then turn on other Bluetooth devices to search for this device and pair them, when only the blue LED on the panel is light up steady, the pairing connection is successful.

**Note:** Bluetooth audio has the priority than the signal from 3.5 mm TRS input. When Bluetooth connected successfully, the audio signal from 3.5 mm TRS input will be replaced automatically.

## Dante configuration

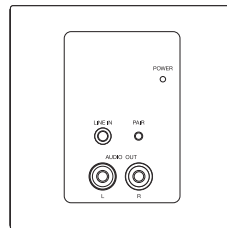
Once the above steps have been completed, the user simply opens the Dante Controller software on the PC and performs the routing configuration of the audio to complete the system.

Stereo Bluetooth or 3.5 mm TRS input audio route directly to Audio channel 1 and 2 of the Dante network. Digital inputs from Dante network can be converted to analogue audio and then output from the RCA output jacks.



**DIC2A23A**

US type panel



**DIC2A23A**

EU type panel

## Specifications

	DIC2A23A / DIC2A23AU
<b>Input</b>	BT Stereo L(CH1)/R(CH2)
	3.5mm TRS L(CH1)/R(CH2)
<b>Output</b>	RCA L(CH1)/R(CH2)
<b>Output Impedance</b>	<600 Ohm (RCA)
<b>Input Impedance</b>	>15K Ohm (3.5mm TRS)
<b>S/N</b>	>96dB A-Weight
<b>THD+N</b>	<0.05%@1KHz
<b>Frequency Response</b>	20Hz-18KHz
<b>Bluetooth</b>	5.1/ SBC/AAC
<b>BT Sampling Rate</b>	24Bit / 48kHz
<b>Dante (AES67) Interface</b>	2 IN / 2 OUT
<b>Network Connection</b>	RJ-45 x 1
<b>Power Supply</b>	802.3af PoE or DC24V(750mA) Input
<b>Dimension</b>	114x70x50 mm (HxWxD) - DIC2A23A
	87x87x50 mm (HxWxD) - DIC2A23AU