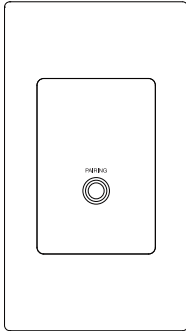


DIT2LBT

Bluetooth/
Dante Wall Plate Interface



OWNERS MANUAL

Operation

Powering up

After **DIT2LBT** is powered and switched on, the Power LED on the panel will light up and flash alternately in blue and red for a short period of time, and if the power is successfully switched on, only red LED will light up steady.

Bluetooth Pairing

Press the button about 3 seconds into pairing mode, the blue LED on the panel will start to flash alternately, indicating this device is now at the pairing mode and visible on other Bluetooth devices and accepting pairing. You can then turn on other Bluetooth devices to search for this device and pair them, when only the blue LED on the panel is light up steady, the pairing connection is successful.

Introduction

The **DIT2LBT** is Bluetooth audio receiving panel, when paired with a compatible Bluetooth enabled device, the panel receives stereo audio from the Bluetooth source, and converse to the Dante network via standard CATx cable with RJ-45 connector.

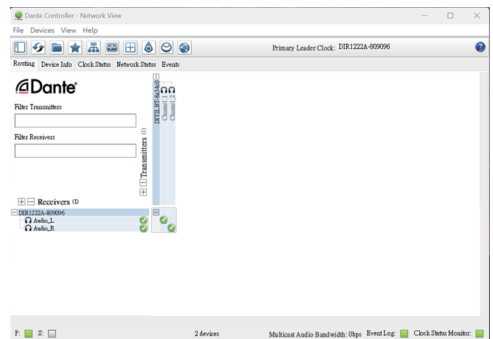
DIT2LBT powered by PoE and features high-quality circuits to provide studio grade of performance without worrying about ground loops or other common audio problems. High performance, simplicity of operation and efficiency of installation make **DIT2LBT** the best to use for installed sound system, teleconferencing, etc.

Features

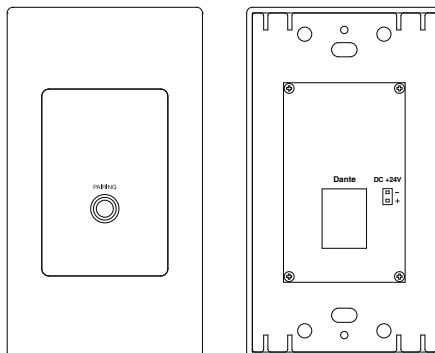
- *Easy Bluetooth connection by a single button.
- *Advanced Bluetooth V5.1 technology.
- *Status LEDs indication on the front panel.
- *Good compatibility with most smartphones, tablets or other Bluetooth devices.
- *Power supply and audio transmission via PoE network switch.
- *Convert Bluetooth Audio Stereo signal to 2 Dante network audio channels.
- *Simply audio configuration and routing by using Dante Controller.

Dante configuration

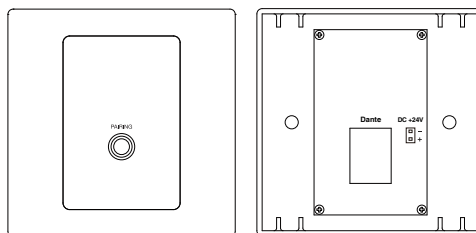
Once the above steps have been completed, the user simply opens the Dante Controller software on the PC and performs the routing configuration of the audio to complete the system.



DIT2LBT US type panel



DIT2LBT EU type panel



Specifications

	MA DIT2LBT / DIT2LBTU
Input	BT Stereo L(CH1)/R(CH2)
S/N	>96dB A-Weight
THD+N	<0.05%@1KHz
Frequency Response	20Hz-18KHz
Bluetooth	5.1/ SBC/AAC
BT Sampling Rate	24Bit / 48kHz
Dante (AES67) Interface	2 IN
Network Connection	RJ-45 x 1
Power Supply	802.3af PoE or DC24V(750mA) Input
Dimension	114x70x50 mm (HxWxD) - DIT2LBT
	87x87x50 mm (HxWxD) - DIT2LBTU