



### ADB-1 ACTIVE DIRECT BOX

- \* Converts 50K Ohms instrument input into balanced 600 Ohms mixer output
- \* Jack-link-output
- \* Power supply via 9V battery
- \* Ground-lift switch
- \* Attenuation adjustable 0dB/-20dB/-40dB
- \* 1 low-impedance XLR-output
- \* Modern convex housing design
- \* Full-rubber-housing corners for safe operation
- \* Cables can be routed under the housing

#### SPEC

Power supply	1 standard 9V battery
Current consumption	approx. 65mA
Battery life	6-8 hours
Frequency range	10Hz-30 KHz
Input impedance	470K Ohms
Output impedance	600 Ohms
Maximum output level	6dBu
Dynamic range	>100dB
Input Connectors	XLR and jack mounting sockets
Output Connectors	XLR mounting plug
THD	0.5%
Dimensions	150x 130x 60 mm
Weight	0.5kg



### PDB-2 DUAL PASSIVE DIRECT BOX

- \* Converts 50K Ohms instrument input into balanced mixer output
- \* Input via XLR/ jack combo sockets.
- \* Ground-lift switch
- \* Attenuation adjustable 0dB/ -20dB/ -40dB
- \* 2 low-impedance XLR-output
- \* Mono model: the signal is split from 1 input on both outputs
- \* Modern convex housing design
- \* Full-rubber-housing corners for safe operation
- \* Cables can be routed under the housing

#### SPEC

Frequency range	15Hz-30 KHz
Input impedance	50K Ohms
Output impedance	600 Ohms
S/N ratio	>95dB



### ADB-2 DUAL ACTIVE DIRECT BOX

- \* Converts 50K Ohms instrument input into balanced mixer output
- \* Power supply via 9V battery
- \* Ground-lift switch
- \* Switchable signal level (+20dB/-30dB)
- \* 2 low-impedance XLR-output
- \* Mono model: the signal is split from 1 input on both outputs
- \* Phase switch
- \* High Cut switch (8 KHz)
- \* Modern convex housing design
- \* Full-rubber-housing corners for safe operation
- \* Cables can be routed under the housing

#### SPEC

Power supply	1 standard 9V battery	Dynamic range	>100dB
Current consumption	approx. 65mA	High Cut	8 KHz
Battery life	6-8 hours	Input Connectors	XLR and jack mounting sockets
Frequency range	10Hz-30 KHz	Output Connectors	XLR mounting plug
Input impedance	470K Ohms	THD	0.5%
Output impedance	600 Ohms	Dimensions	150x 130x 60 mm
Maximum output level	6dBu	Weight	0.5kg

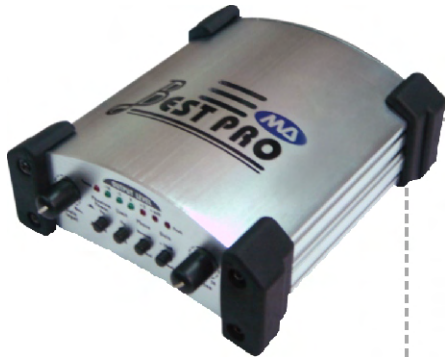


### BP-1 DUAL CHS MICROPHONE PREAMP

- \* 2 Chs Microphone Preamp
- \* Inputs and outputs: XLRs
- \* Each Ch has the gain control and Peak LED indicator
- \* Selectable +48V Phantom Power Supply
- \* Aluminium Case with rubber feet
- \* Power: 9V Battery

#### SPEC

Input Impedance	10KΩ
Max Input Level	+4dB
Max Gain	50dB (XLR)
THD	<0.01%
IMD	<0.01%



## BP-1 PLUS TUBE MICROPHONE PREAMP

- \* 12AX7 Vacuum Tube is used for warm sound and Lowest noise
- \* Limiter switch to prevent distortion
- \* Phase switch to reverse the input signal
- \* Selectable +48V Phantom power supply
- \* +20dB Gain switch provided
- \* LED indicators for output level
- \* Input and output plug: balance 1/4" TRS and XLR
- \* Aluminium case with rubber feet
- \* Power: AC 9V

### SPEC

#### XLR input

Connector	Balanced/unbalanced
Type	Transformerless, DC-decoupled input
Impedance	2K $\Omega$
Max. Input level	+7dBu/20dB with Gain

#### 1/4" TRS input

Connector	Balanced/ unbalanced
Type	Transformerless. DC-decoupled input
Impedance	1M $\Omega$
Max. input level	+16dBu/ 20dB with Gain

#### Audio output

Connectors	XLR and 1/4" TRS connector balanced/ unbalanced
Type	Transformerless. DC-decoupled input
Impedance	700 $\Omega$ balanced/ 350 $\Omega$ unbalanced
Max. output level	+26dBu @ 100K $\Omega$

#### Frequency response

Mic input	<10Hz~43K Hz (+/-3dB)
Line input	<10Hz~40K Hz (+/-3dB)

#### Function controls

Gain	Variable (Mix to Max)
Output	Variable (0 to +20dB)

#### Function switches

20dB Gain	Level attenuation (20dB)
+48V	Activates the phantom power
Phase reverse	Limits the output signal
Input Level	6-segment LED meter: -10, -5, 0, +3, +6dB, Peak
Power LED	Indicates operation
Dimensions	2 1/2" (49mm)x 5 1/4" (132mm)x 5 1/4" (155mm)
Weight	0.5kgs